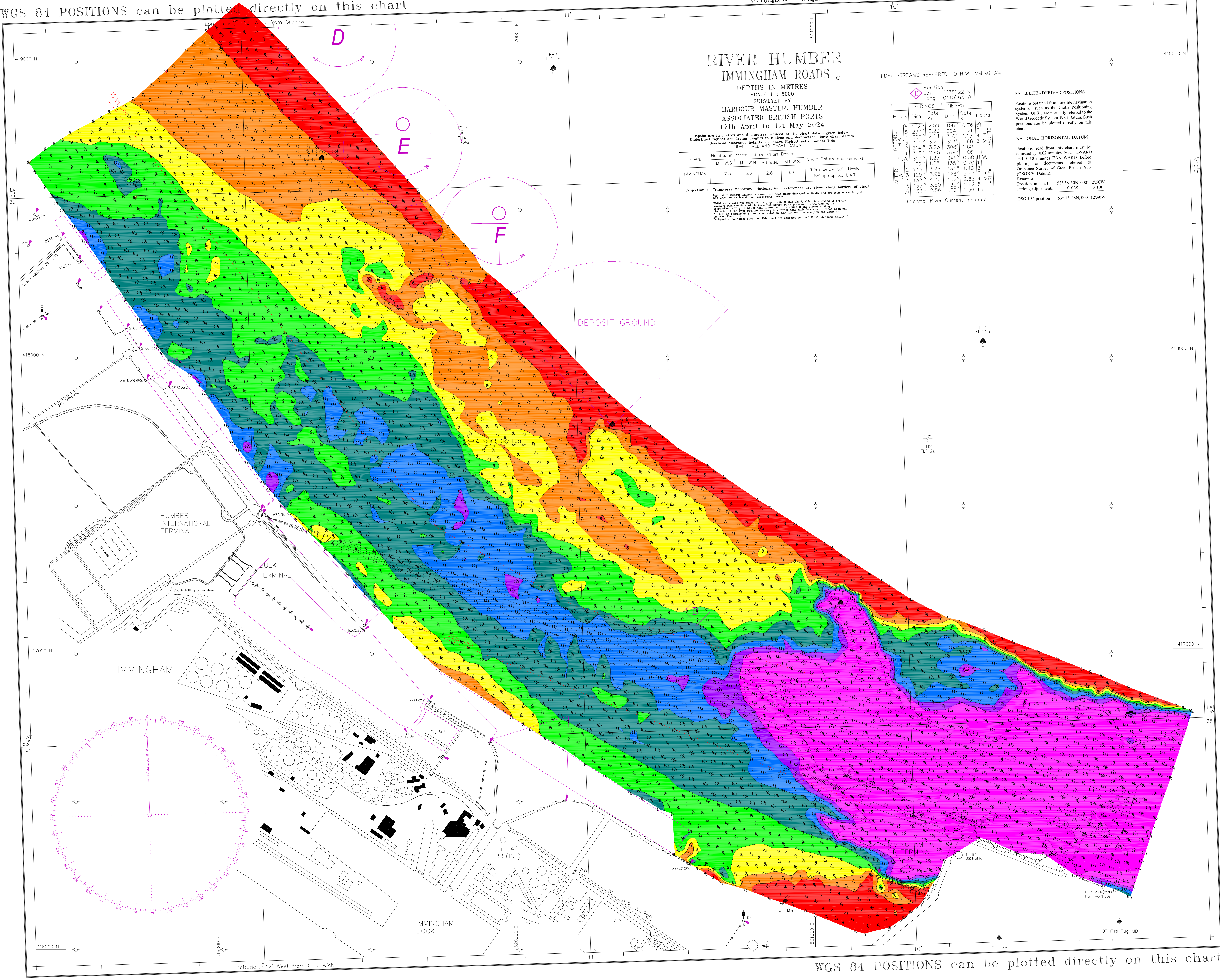


WGS 84 POSITIONS can be plotted directly on this chart

© Copyright 2024. All rights reserved. No part of this product may be reproduced in any form (including photocopying or by electronic means) without prior permission.



RIVER HUMBER IMMINGHAM ROADS

DEPTHS IN METRES
SCALE 1 : 5000
SURVEYED BY
HARBOUR MASTER, HUMBER
ASSOCIATED BRITISH PORTS
17th April to 1st May 2024

Depths are in metres and decimetres reduced to the chart datum given below
Underlined figures are drying heights in metres and decimetres above chart datum
Overhead clearance heights are above Highest Astronomical Tide
TIDAL LEVEL AND CHART DATUM

PLACE	Heights in metres above Chart Datum			Chart Datum and remarks
	M.H.W.S.	M.H.W.N.	M.L.W.N.	
IMMINGHAM	7.3	5.8	2.6	0.9 3.9m below O.D. Newlyn Being approx. L.A.T.

Projection: Transverse Mercator. National Grid references are given along borders of chart.
Light stars without legends represent two fixed lights displayed vertically and are seen as red to port and green to starboard when proceeding upriver.
Wight every day use taken in the preparation of this Chart, which is intended to provide
Measures with the data which associated British Ports presented in the form of 10
provisionally, all other sources than those mentioned in the text of the chart are
of the river bed, the waters of the river, the state of the river, the state of the
further an responsibility can be accepted by ADP for any inaccuracy in the Chart or
Bathymetric soundings shown on this chart are related to the U.S.N.C. standard datum C.

TIDAL STREAMS REFERRED TO H.W. IMMINGHAM

Position	SPRINGS		NEAPS		Hours
	Dirn	Rate Kn	Dirn	Rate Kn	
BEFORE	132°	2.59	106°	0.76	BEFORE H.W. M.L.W. AFTER
H.W.	239°	0.20	004°	0.21	
H.W.	303°	2.24	310°	1.13	
H.W.	314°	3.23	313°	1.68	
H.W.	315°	2.95	319°	1.06	
H.W.	122°	1.25	135°	0.70	
AFTER	133°	3.26	134°	1.40	AFTER H.W. M.L.W. BEFORE
H.W.	129°	3.96	128°	2.43	
H.W.	132°	4.36	132°	2.83	
H.W.	135°	3.50	135°	2.62	
H.W.	132°	2.86	136°	1.56	
H.W.	132°	2.86	136°	1.56	

(Normal River Current Included)

SATELLITE - DERIVED POSITIONS
Positions obtained from satellite navigation systems, such as the Global Positioning System (GPS), are normally referred to the World Geodetic System 1984 Datum. Such positions can be plotted directly on this chart.

NATIONAL HORIZONTAL DATUM
Positions read from this chart must be adjusted by 0.02 minutes SOUTHWARD and 0.10 minutes EASTWARD before plotting on documents referred to Ordnance Survey of Great Britain 1936 (OSGB 36 Datum).
Example:
Position on chart 53° 38' 50N, 000° 12' 50W
lat/long adjustments 0'.02S 0'.10E
OSGB 36 position 53° 38' 48N, 000° 12' 40W

WGS 84 POSITIONS can be plotted directly on this chart